

Insert a VariSoft Infusion Set

for the t:slim X2 Insulin Pump

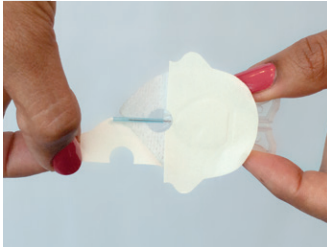


QUICK
REFERENCE

UNITS OF MEASURE MG/DL

This reference sheet is intended to supplement the instructions included with your VariSoft™ infusion set. Please refer to those instructions (available for download at tandemdiabetes.com/support) for a complete list of warnings and precautions.

1.

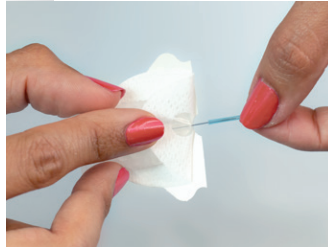


Hold the indented sides of the introducer needle with one hand and gently remove the front backing paper with the other.

CAUTION: DO NOT touch or bend the introducer needle.

NOTE: Clean the insertion area with an alcohol prep pad or other skin preparation as recommended by your healthcare provider.

2.



Remove the needle guard from the introducer needle by gently twisting and pulling it off.

3.



Pinch the skin at your selected insertion area with one hand to help lift the skin away from any muscle tissue.

4.



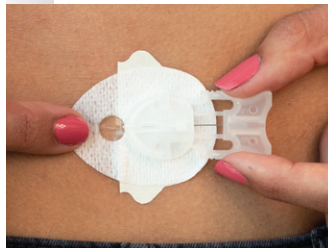
Insert the introducer needle and release the pinched skin. This will leave the cannula in the layer of fat just below the skin, but above muscle tissue.

5.



Secure the front piece of the adhesive tape to your skin by pressing down on the tape.

6.



To remove the introducer needle, gently place your finger in front of the clear window, squeeze the grooved sides with your other hand, and pull the introducer needle straight back.

7.



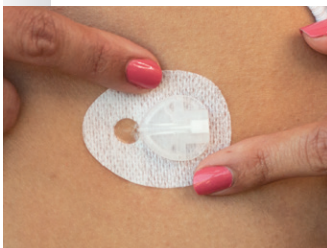
If you have trouble removing the introducer needle, you may be pressing on the needle with your finger. Try straddling the clear window with two fingers to secure the adhesive tape while pulling straight back.

8.



Gently place your finger in front of the clear window, carefully lift the cannula housing to expose the back, and remove the rest of the backing paper from the cannula housing.

9.



Massage the adhesive tape thoroughly onto your skin.

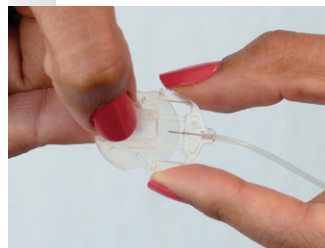
CAUTION: DO NOT attempt to straighten the adhesive if curled.

10.



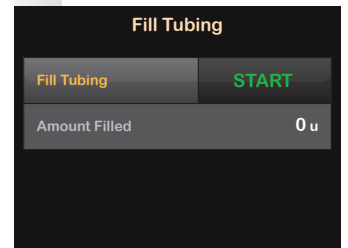
To attach the infusion set tubing to the t:lock™ connector on the cartridge, twist the connector clockwise until tight, then twist another quarter of a turn to ensure a secure connection.

11.



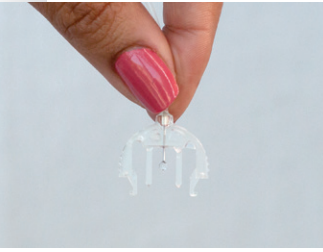
Remove the circular protective cap from the connector needle.

12.



Fill your tubing according to the instructions detailed in the user guide that came with your Tandem Diabetes Care® insulin pump.

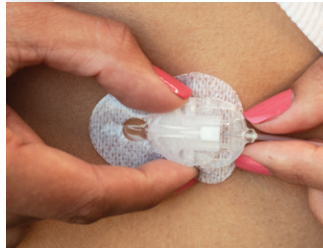
13.



When filling the tubing, hold the connector needle pointing down. Make sure there are no gaps of air in the tubing. Stop priming after three drops of insulin have appeared.

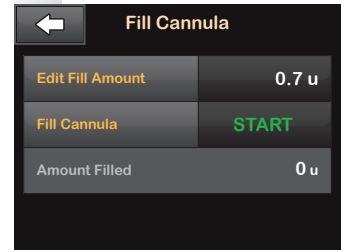
CAUTION: DO NOT fill tubing while the infusion set is connected to your body.

14.



Hold the connector needle at the point where it connects with the tubing and with the open notches of the connector needle facing your body, insert it into the cannula housing. You should hear a click.

15.



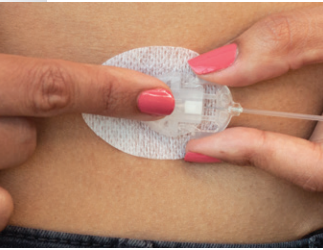
Fill cannula 0.7 units.

CAUTION: ALWAYS check your glucose levels two hours after inserting to make sure it's working properly.



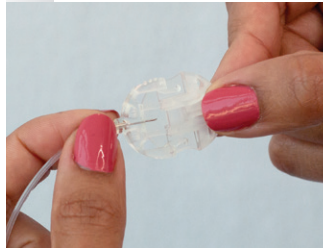
Temporarily Disconnect Your Infusion Set

1.



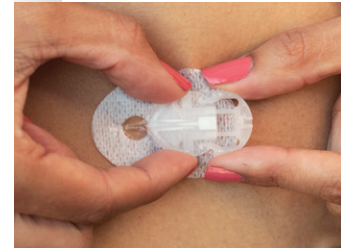
Place your finger on top of the cannula housing, gently squeeze the grooved sides of the VariSoft infusion set and pull the connector needle straight out.

2.



Insert the circular protective cap into the connector needle.

3.

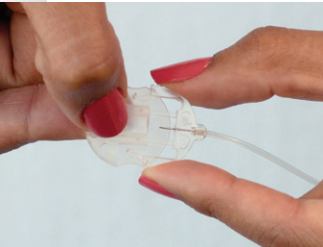


Insert the disconnect cover into the cannula housing.



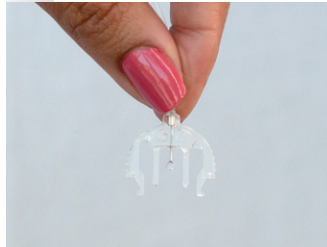
Reconnect Your Infusion Set

1.



Remove the circular protective cap from the connector needle.

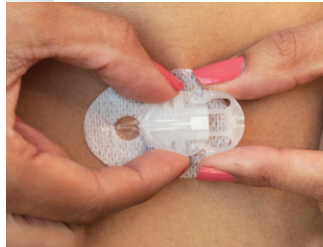
2.



With the needle pointing down, fill the tubing until you see insulin drop from the needle.

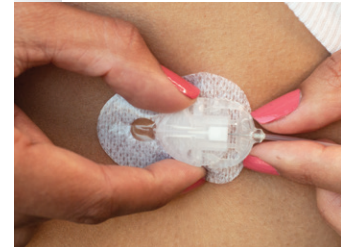
CAUTION: DO NOT fill tubing while the infusion set is connected to your body.

3.



Remove the disconnect cover from the cannula housing.

4.



Hold the connector needle at the point where it connects with the tubing and insert it into the cannula housing. You should hear a click.

t:slim X2 Insulin Pump

TANDEM
DIABETES CARE

(877) 801-6901
tandemdiabetes.com

CONNECT WITH US ON:



Important Safety Information: RX ONLY. These infusion sets are indicated for the subcutaneous infusion of insulin administered by the t:slim X2™ insulin pump for the treatment of diabetes. These infusion sets are indicated for single use. For contraindications, warnings, precautions, and other important information, please refer to the instructions for use accompanying the infusion sets.

© 2021 Tandem Diabetes Care, Inc. All rights reserved. Tandem Diabetes Care, t:lock, t:slim X2, and VariSoft are either registered trademarks or trademarks of Tandem Diabetes Care, Inc. in the United States and/or other countries. All third-party marks are the property of their respective owners. ML-1008722_A