

Insert a TruSteel Infusion Set

for the t:slim X2 Insulin Pump



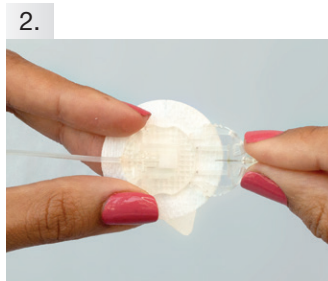
UNITS OF MEASURE MG/DL

This reference sheet is intended to supplement the instructions included with your TruSteel™ infusion set. Please refer to those instructions (available for download at tandemdiabetes.com/support) for a complete list of warnings and precautions.

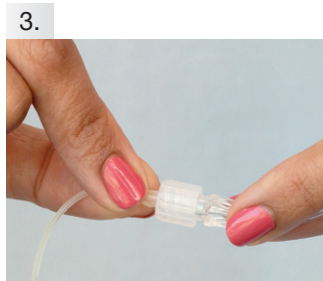


Open packaging and remove the circular protective cap from the connector needle.

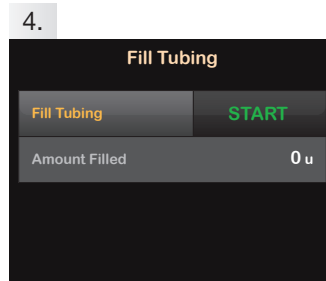
NOTE: Clean the insertion area with an alcohol prep pad or other skin preparation as recommended by your healthcare provider.



Connect the tubing to the coupling housing by holding the connector needle at the point where it connects with the tubing and insert it into the coupling housing. You should hear a click.



To attach the infusion set tubing to the t:lock™ connector on the cartridge, twist the connector clockwise until tight, then twist another quarter of a turn to ensure a secure connection.



Fill your tubing according to the instructions detailed in the user guide that came with your Tandem Diabetes Care® insulin pump.



When filling the tubing, hold the steel needle pointing down. Make sure there are no gaps of air in the tubing. Stop after three drops of insulin have appeared from the needle.

CAUTION: DO NOT fill tubing while the infusion set is connected to your body.



While holding the retaining wings of the infusion set, carefully remove the backing paper under the steel needle.



Remove the needle guard from the steel needle by gently twisting and pulling it off.

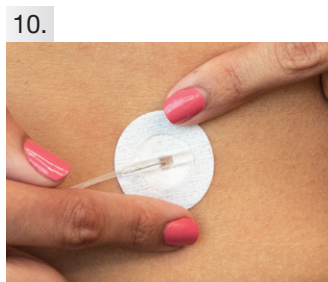


Pinch the skin at your selected insertion area with one hand to help lift the skin away from any muscle tissue.

NOTE: The edges of the steel needle can be bent to provide better stability while inserting.

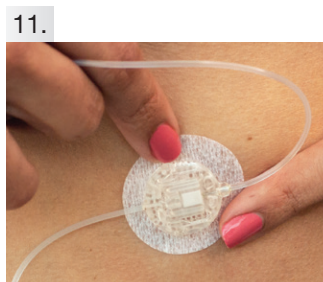


Insert the introducer needle and release the pinched skin. This will leave the cannula in the layer of fat just below the skin, but above muscle tissue.



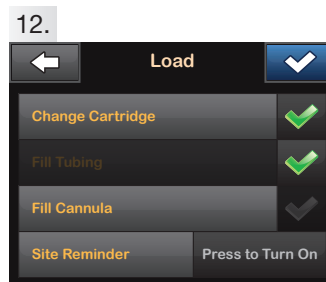
Secure the adhesive tape to your skin by pressing down on the tape.

CAUTION: DO NOT attempt to straighten the adhesive if curled.



Remove the backing paper from the coupling housing and attach it to a location on your skin that allows for easy disconnection.

Ensure that the tubing between the introducer needle and housing is not too tight.

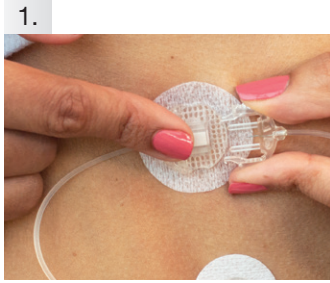


Skip the “Fill Cannula” step in the load process, set your Site Reminder for 24 to 48 hours, depending on your insulin type, and resume insulin.

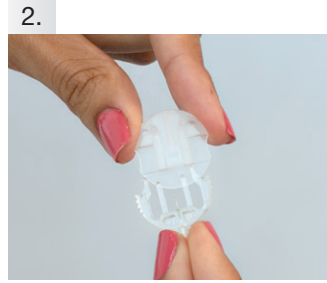
CAUTION: Always check glucose levels two hours after inserting to make sure it's working properly.



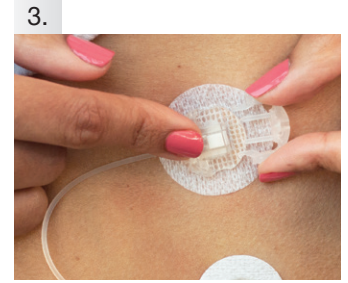
Temporarily Disconnect Your Infusion Set



1. Place your finger in front of coupling housing, gently squeeze the sides of the TruSteel infusion set and pull the connector needle straight out.



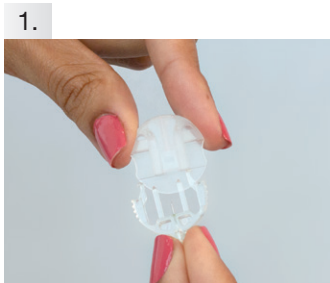
2. Insert the circular protective cap into the connector needle.



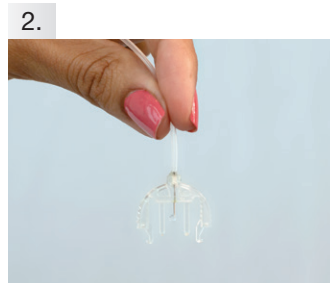
3. Insert the disconnect cover into the coupling housing.



Reconnect Your Infusion Set

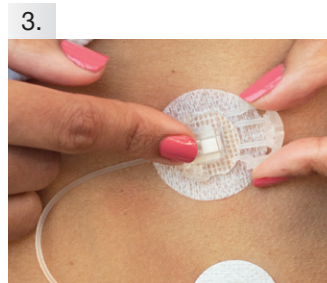


1. Remove the circular protective cap from connector needle.

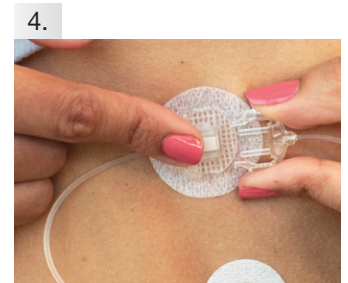


2. With the needle pointing down, fill the tubing until you see insulin drop from the needle.

CAUTION: DO NOT fill tubing while the infusion set is connected to your body.



3. Remove the disconnect cover from the coupling housing.



4. Hold the connector needle at the point where it connects with the tubing and insert it into the coupling housing. You should hear a click.

t:slim X2 Insulin Pump



TANDEM
DIABETES CARE

(877) 801-6901
tandemdiabetes.com

CONNECT WITH US ON:



Important Safety Information: RX ONLY. These infusion sets are indicated for the subcutaneous infusion of insulin administered by the t:slim X2™ insulin pump for the treatment of diabetes. These infusion sets are indicated for single use. For contraindications, warnings, precautions, and other important information, please refer to the instructions for use accompanying the infusion sets.

© 2021 Tandem Diabetes Care, Inc. All rights reserved. Tandem Diabetes Care, t:lock, t:slim X2, and TruSteel are either registered trademarks or trademarks of Tandem Diabetes Care, Inc. in the United States and/or other countries. All third-party marks are the property of their respective owners. ML-1008721_A