



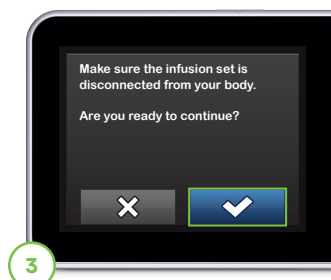
The instructions below are provided as a reference tool for caregivers who are already familiar with the use of an insulin pump and with insulin therapy in general. Not all screens are shown. For more detailed information on the operation of the t:slim X2 insulin pump, please refer to its user guide.



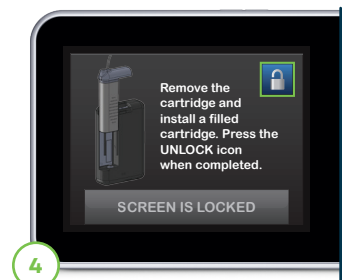
1 From the **Options** menu, tap **Load**. Tap **Change Cartridge**.



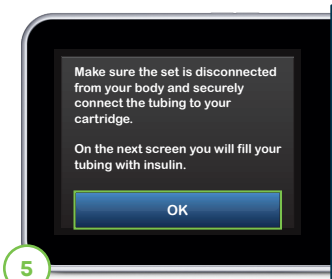
2 A screen will appear to confirm that all insulin deliveries will be stopped. Tap to continue.



3 Disconnect the infusion set from the user's body and tap to continue.



4 Remove the used cartridge and install a filled cartridge. Tap the unlock icon when completed. Tap to continue.



5 Verify that the infusion set is disconnected from the user's body. Connect the infusion set tubing to the tubing connector on the cartridge. Tap to confirm.



6 Hold the pump vertically to ensure any air in the cartridge will be dispelled first. Tap **START**. The pump will beep or vibrate regularly while the tubing is filled.



7 Tap **STOP** after three drops of insulin are seen at the end of the infusion set tubing. Verify that drops are seen and tap **DONE**.

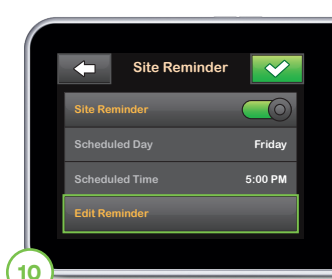


8 From the Load screen, tap **Fill Cannula**. Insert a new infusion set and connect filled tubing to site, then tap to continue.

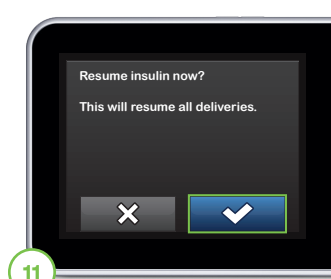
Note: When using a steel needle, there is no cannula. Skip to step 10.



9 Tap **Edit Fill Amount**. Select amount needed. Refer to the infusion set Instructions for Use for proper cannula fill amount. Tap **START**.



10 After the cannula fill is complete, user may set a Site Change Reminder. Tap if correct. Tap **Edit Reminder** if settings need to be changed.



11 Load screen is displayed. Tap to continue. A reminder to test blood glucose (BG) in 1-2 hours will display. Tap to confirm.



12 The RESUMING INSULIN screen will appear.

Important Safety Information: RX ONLY. Tandem insulin pumps are intended for the subcutaneous delivery of insulin, at set and variable rates, for the management of diabetes mellitus in persons requiring insulin. The t:slim X2 insulin pump is approved for individuals 6 years of age and older. For Important Safety Information, please visit tandemdiabetes.com/safetyinfo.

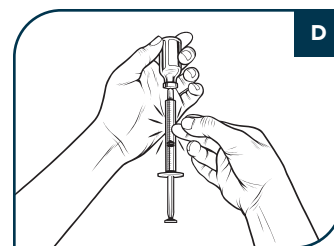
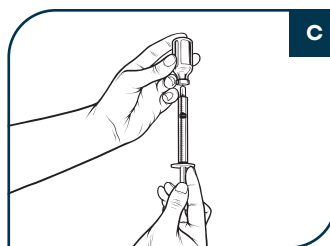
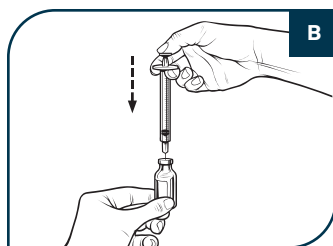
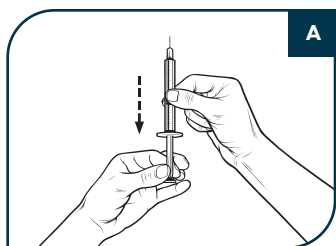
© 2022 Tandem Diabetes Care, Inc. All rights reserved. Tandem Diabetes Care and t:slim X2 are either registered trademarks or trademarks of Tandem Diabetes Care, Inc. in the United States and/or other countries. ML-1002614_F



Instructions for drawing insulin from vial into syringe

Use proper clean technique while performing the following instructions.

- 01 Inspect the needle and syringe package for any signs of damage. Discard any damaged product.
- 02 Wash hands thoroughly.
- 03 Wipe the rubber septum of the insulin vial with an alcohol swab.
- 04 Remove the needle and syringe from their packaging. Securely twist needle onto syringe. Safely remove protective cap from needle by pulling outward.
- 05 Draw air into syringe up to the amount of insulin desired **(see image A)**.
- 06 With insulin vial upright, insert needle into vial. Inject air from syringe into vial. Maintain pressure on syringe plunger **(see image B)**.
- 07 With needle still inserted into vial, turn vial and syringe upside down. Release syringe plunger. Insulin will begin to flow from the vial into the syringe.
- 08 Slowly pull back the plunger to the desired amount of insulin **(see image C)**.
- 09 While the filling needle is still in the vial and upside down, tap the syringe so that any air bubbles rise to the top **(see image D)**. Then slowly push the plunger upwards, forcing any air bubbles back into the vial.
- 10 Check the syringe for air bubbles and do one of the following:
 - a. If there are air bubbles present, repeat step 9.
 - b. If no air bubbles are present, remove the filling needle from the vial.



Instructions for filling the cartridge

Depending on the pump model, an onscreen message will instruct the user either to load an empty cartridge or a filled cartridge onto the pump. Refer to the User Guide that came with the system for detailed installation instructions. If instructed to load an unused (empty) cartridge, perform the following after loading the cartridge onto the pump. If instructed to load a filled cartridge, perform the following before loading the cartridge onto the pump.

- 01 Inspect the cartridge package for any signs of damage. Discard any damaged product.
- 02 Open the package and remove the cartridge.
- 03 Hold the cartridge upright and gently insert the needle into the white insulin fill port on the cartridge **(see image E)**. The needle is not intended to go all the way in, so do not force it.
- 04 Keeping the syringe vertically aligned with the cartridge, and the needle inside the fill port, pull back on the plunger until it is fully retracted **(see image F)**. This will remove any residual air from the cartridge. Bubbles will rise toward the plunger.
- 05 Make sure the needle is still in the fill port and release the plunger. Pressure will pull the plunger to its neutral position but it will NOT push any air back inside the cartridge **(see image G)**.
- 06 Withdraw the needle from the fill port.
- 07 Turn the syringe upright and pull down on the plunger **(see image H)**. Flick the barrel to make sure that any air bubbles rise to the top.
- 08 Gently press on the plunger to remove air bubbles until insulin fills the needle hub and you see a drop of insulin at the tip of the needle **(see image I)**.
- 09 Re-insert the needle in the fill port and slowly fill the cartridge with insulin **(see image J)**. It is normal to feel some back pressure as the plunger is depressed.
- 10 Maintain pressure on the plunger while the needle is removed from the cartridge. Check the cartridge for leaks. If insulin leakage is detected, discard the cartridge and repeat entire process with a new cartridge.
- 11 Always dispose of used needles, syringes, cartridges, and infusion sets following community regulations.

